

Basic Obstetric Ultrasound Workshop

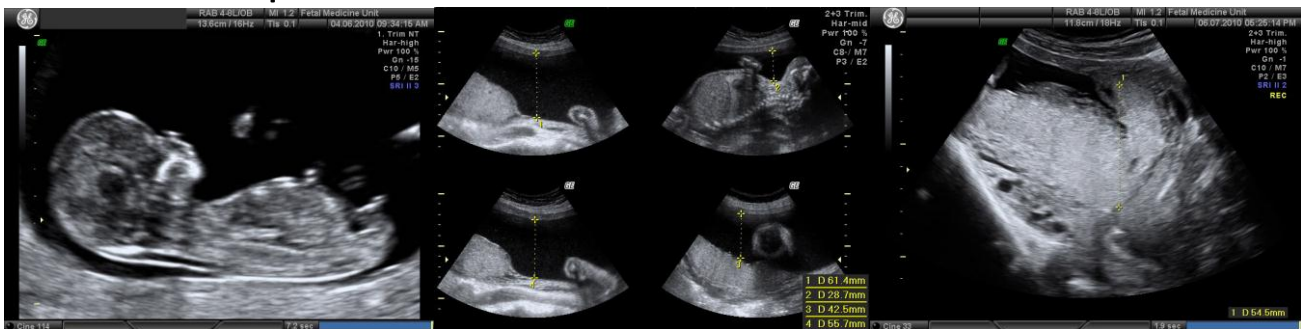
A one day Practical Course in line with RCOG requirements

Course Directors

Mr Pranav Pandya, Director of Fetal Medicine, UCLH

Miss Melissa Whitten, Consultant in Obstetrics and Fetal Medicine, UCLH

Hands on topics include:



First Trimester Viability
and dating

Second Trimester Liquor
assessment

Second trimester biometry
and placental site location

Saturday 9th March 2013
Elizabeth Garrett Anderson Wing
University College London Hospital



This one day workshop is designed to teach practical skills in ultrasound to meet the requirements of the RCOG Specialty Training Curriculum for basic obstetric ultrasound training. It comprises classroom sessions complemented by extensive practical hands on training conducted by expert mentors.

To qualify for the course, delegates will need to have observed two routine obstetric ultrasound sessions (including 1st and 2nd trimester), and will have ideally attended the RCOG Theoretical Course.

The classroom sessions will cover:

- Orientation
- Biometry rights and wrongs – 1st and 2nd trimester
- Anatomy
- Placental site
- Liquor volume assessment
- Multiple pregnancy
- Communication
- Role of ultrasound on the Labour Ward

The hands on sessions will cover:

- Orientation
- Viability
- Presentation
- Biometry (CRL + BPD, OFD, AC, FL)
- Placental site
- Amniotic fluid index

How to join the course

Places are limited and are only confirmed on receipt of payment by cheque

Payment by cheque: Fill out the form below and send it, together with a cheque for **£250** made out to *Trustees of UCLH Charity Fund 0743* to: Fang Huang, Institute for Women’s Health, University College London, G35, Medical School Building, 74 Huntley Street, London, WC1E 6AU
Tel: 020 3108 2032 Fax: 020 3108 2037

Questions: Email IfWH-workshop@ucl.ac.uk or fang.huang@ucl.ac.uk

Register here - I would like to attend the Institute for Women’s Health Basic Obstetric Ultrasound Workshop at University College London Hospital on Saturday 9th March 2013

BLOCK CAPITALS PLEASE AND COMPLETE ALL SECTIONS

Title: Dr/Mr/Mrs/Miss/Ms *delete as appropriate*

Last name: First name:.....

Job Title:Hospital:.....

Address for correspondence:

.....Postcode:.....

Daytime tel. no:Ext:..... Email:.....

Special Dietary Requirements:.....

The course fee is £250, which includes lunch, refreshments and an evening drinks reception.

PAYMENT MUST BE SUBMITTED WITH THE APPLICATION FORM TO SECURE A PLACE ON THE WORKSHOP.

ONCE PAYMENT IS CONFIRMED, REFUNDS WILL ONLY BE PERMITTED IF NOTIFIED BY FRIDAY 8TH FEBRUARY 2013.

Payment by Cheque

You will be sent an email receipt once payment is received.

Signed: **Date:**.....

Programme

08:00	Registration	
08:30	Welcome and Introduction	Aims and programme
08:45	Lecture 1	Operating the machine The 'routine scan' Identifying anatomical features What you can see and when
09:00	Lecture 2	Biometry rights and wrongs Plotting measurements Scanning on the Labour Ward
09:20	Discussion	
09:30	Live demonstration	1st and 2nd trimester scan
10:15	Refreshments	
10:30	Hands on session 1	Rotating half hour sessions consisting of a short demonstration followed by hands on scanning for all
13:00	Lunch	
14:00	Hands on session 2	Rotating half hour sessions consisting of a short demonstration followed by hands on scanning for all
18:00	Close of meeting	
18:15	Complimentary drinks reception for all delegates	

Hands on sessions

These are a key part of the workshop. Featuring the latest ultrasound technology, during these hands-on sessions the attendees will be under the guidance of expert mentors. The sessions are meant to be highly interactive and the aim is that each attendee gains a full appreciation of the practical side of scanning in the first and second trimesters.

First trimester

- Viability and dating

Second trimester

- Presentation
- Placental location
- Biometry
- Plotting measurements

The intended aims of the workshop are that all delegates will have acquired knowledge and skills which will equip them to achieve the Basic Logbook competences as laid out in the RCOG Specialty Training Curriculum.

The venue

The venue is the Fetal Medicine Department in the Elizabeth Garret Anderson Wing of University College London Hospital. The Wing is served by frequent bus services - and two tube stations are close by, Euston Square and Warren Street (see be-low).

Bus services

Local bus services that stop near the hospital are: 10, 73, 24, 29, 134 (Tottenham Court Rd); 10, 24, 29, 73, 134 (Gower St); 18, 27, 30, 88 (Euston Rd).

Rail services

Warren Street (Northern & Victoria Lines) Euston Square (Circle, Hammersmith & City and Metropolitan lines). Euston (national and suburban rail, Victoria and Northern lines).

Arriving by road

Parking is very limited near to the hospital, so we do not recommend driving to the hospital if possible. There are a small number of pay and display bays near to the hospital entrance. If you must drive, please be aware that the hospital is within the congestion charge zone.

The main EGA entrance is on Grafton Way at the rear of the main entrance to University College Hospital.

On site car parking

Not available

Full address of course venue

Fetal Medicine Unit
1st floor Integrated Antenatal Service
Elizabeth Garrett Anderson Wing UCLH
Grafton Way
London
NW1 2BU



This course is kindly supported by GE Healthcare

For more information

Please email: IfWH-workshop@ucl.ac.uk or fang.huang@ucl.ac.uk

Telephone: 020 3108 2032

Or go to our website <http://www.instituteforwomenshealth.ucl.ac.uk>

